

# HOW TO IDENTIFY YOUR VEHICLE

## NOTE

When enquiring about seatbelts for your vehicle you may be asked a series of questions such as:

- MAKE: FORD, HOLDEN, TOYOTA, etc
- MODEL: FALCON, COMMODORE, COROLLA, etc
- CHASIS: AU, VY, AE101, ETC (as per Fig 1.)
- YEAR: 1994 etc
- BODY SEDAN, WAGON, HATCH, COUPE etc
- SEAT: DRIVERS , BENCH, BUCKET etc

Giving specific information assists with determining which seatbelt assembly is more suitable for your application. Often various models are released the same year as an existing model and can often cause confusion as to which seatbelt is actually required.

To highlight this issue we will use an example of different Toyota Corolla models manufactured around the year 1994.(Fig 2.)

By asking the right questions we can get the right answers.

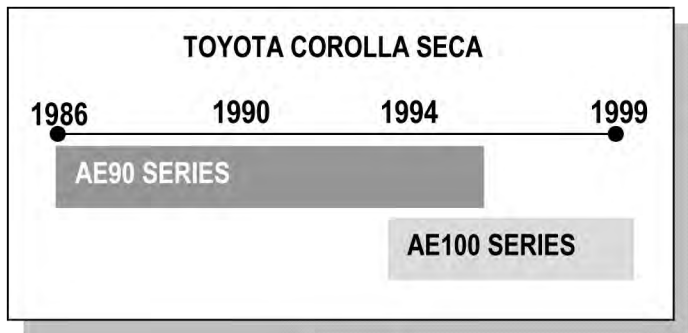


FIGURE 2

For applications where it is not clear which seatbelt is suitable, we will need to identify the following information. (Fig. 3)

- BUCKLE: LOCATION, LENGTH & TYPE
- BELT: RETRACTABLE, NON RETRACTABLE
- STYLE: LAP OR LAP SASH(SHOULDER)
- ANGLE: VERTICAL, FORWARD, BACKWARD
- LENGTH: FULLY EXTENDED
- MOUNT: ON-PILLAR (EXTERNAL), IN-PILLAR (INTERNAL)

Using this information will help determine a suitable seatbelt replacement for your vehicle.

## SPECIFIC INFORMATION

### CHASIS CODE

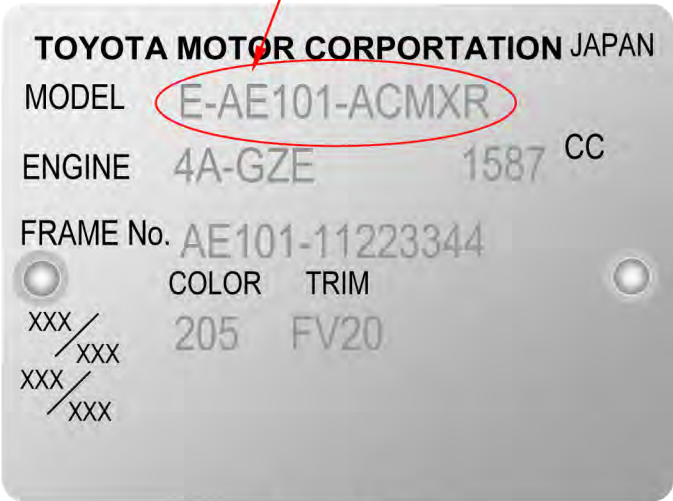


FIGURE 1

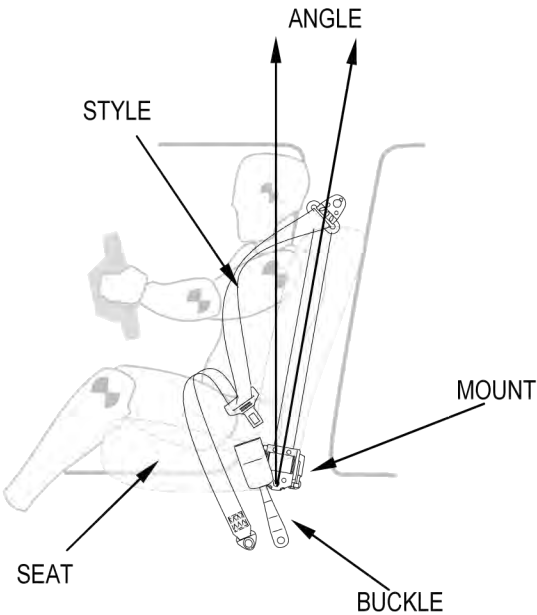


FIGURE 3